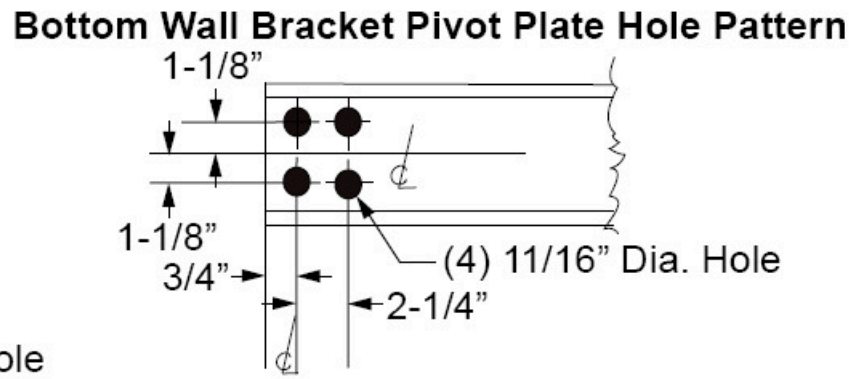
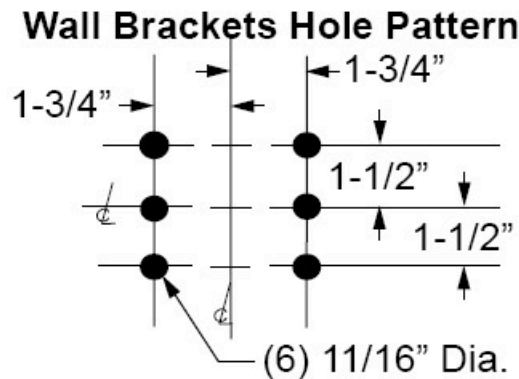
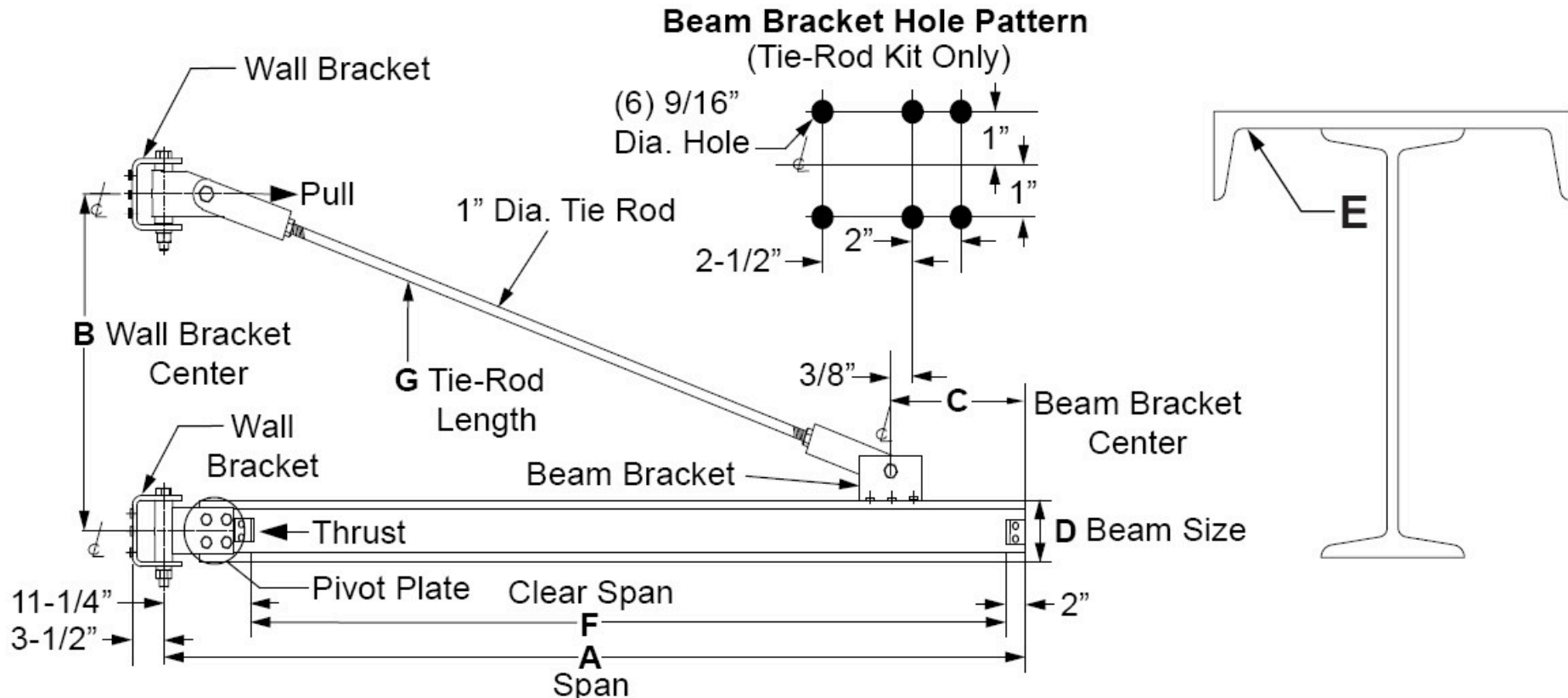
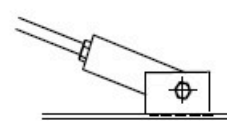


# 1/2-TON CAPACITY: MODEL NUMBERS, SHIPPING WEIGHTS

"S" = S-Beam.



\*Welded Beam Bracket



A	SPAN	8 ft.	10 ft.	12 ft.	14 ft.	16 ft.	18 ft.	20 ft.	22 ft.	24 ft.	26 ft.	28 ft.	30 ft.
	MODEL NUMBER	301-050-08	301-050-10	301-050-12	301-050-14	301-050-16	301-050-18	301-050-20	301-050-22	301-050-24	301-050-26	301-050-28	301-050-30
B	WALL-BRACKET CENTER	2' 9"	3' 0"	3' 9"	4' 6"	5' 6"	6' 0"	6' 6"	7' 0"	7' 6"	8' 0"	9' 0"	10' 0"
C	BEAM-BRACKET CENTER	1' 3"	1' 6"	1' 9"	2' 0"	2' 0"	2' 0"	2' 3"	2' 3"	2' 6"	2' 6"	3' 0"	3' 6"
D	BEAM SIZE	S6x12.5#	S6x12.5#	S6x12.5#	S6x12.5#	S6x12.5#	S8x18.4#	S10x25.4#	S10x25.4#	S10x25.4#	S10x25.4#	S12x31.8#	S12x31.8#
E	CAP CHANNEL SIZE	N/A	N/A	N/A	N/A	N/A	N/A	N/A	C8x11.5#	C8x11.5#	C8x11.5#	C8x11.5#	C8x11.5#
F	CLEAR SPAN	6' 9-3/4"	8' 9-3/4"	10' 9-3/4"	12' 9-3/4"	14' 9-3/4"	16' 9-3/4"	18' 9-3/4"	20' 9-3/4"	22' 9-3/4"	24' 9-3/4"	26' 9-3/4"	28' 9-3/4"
G	TIE-ROD LENGTH	5' 7"	7' 4"	9' 5"	11' 2"	13' 4"	15' 5"	17' 2"	19' 3"	21' 1"	23' 1"	25' 1"	26' 7"
	THRUST/PULL (LBS.)	3,710	4,790	4,350	4,320	4,110	4,380	4,660	5,120	5,320	5,800	5,670	6,010
	WEIGHT (LBS.)	192	222	253	283	314	449	489	619	739	914	986	1,407