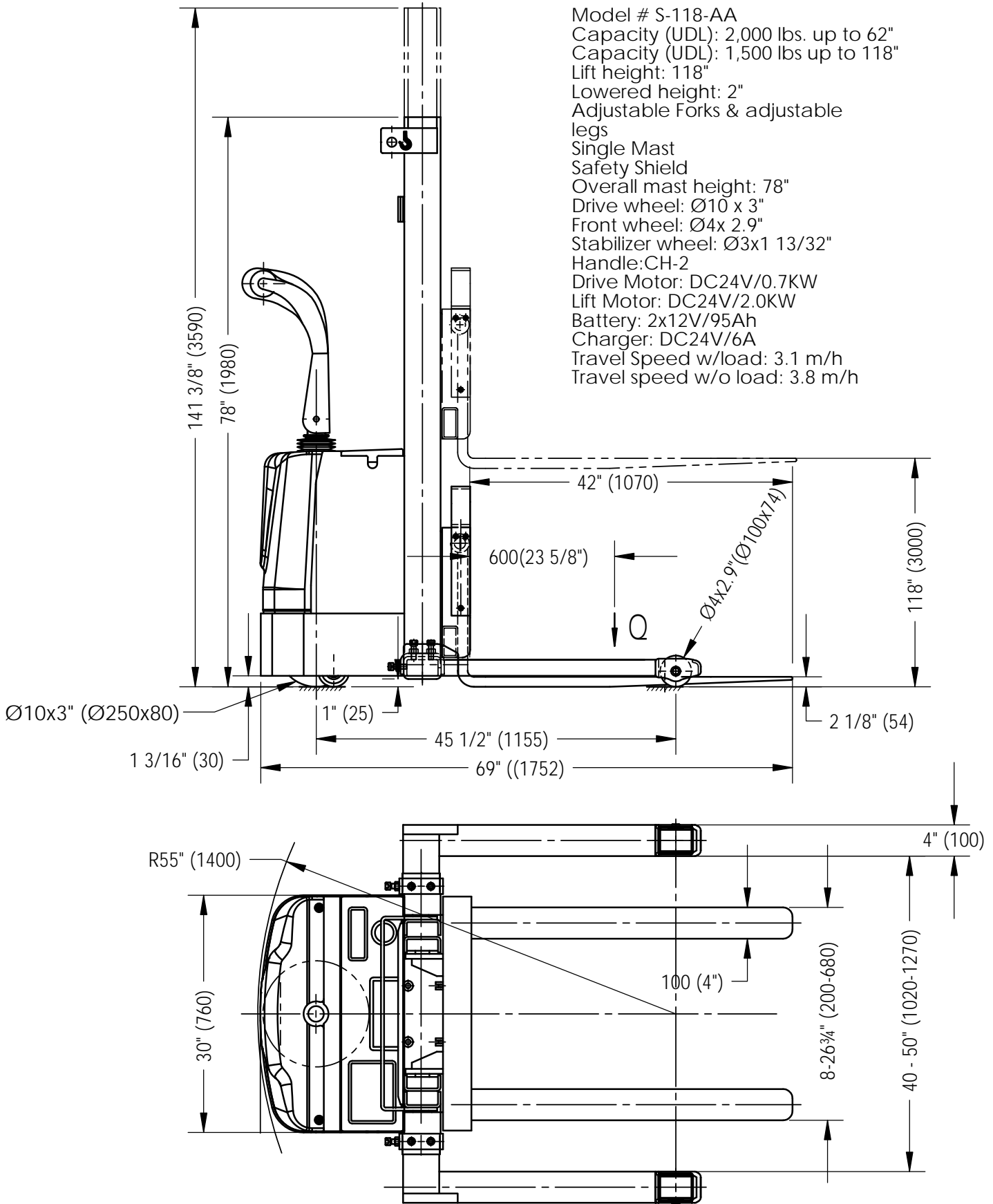


Specifications

Model # S-118-AA
 Capacity (UDL): 2,000 lbs. up to 62"
 Capacity (UDL): 1,500 lbs up to 118"
 Lift height: 118"
 Lowered height: 2"
 Adjustable Forks & adjustable legs
 Single Mast
 Safety Shield
 Overall mast height: 78"
 Drive wheel: Ø10 x 3"
 Front wheel: Ø4x 2.9"
 Stabilizer wheel: Ø3x1 13/32"
 Handle:CH-2
 Drive Motor: DC24V/0.7KW
 Lift Motor: DC24V/2.0KW
 Battery: 2x12V/95Ah
 Charger: DC24V/6A
 Travel Speed w/load: 3.1 m/h
 Travel speed w/o load: 3.8 m/h



VESTIL MANUFACTURING CORP.		
DRAWN BY: TM	DATE: 09/18/2012	DRWG./FILE NAME:
Reference:		S-118-AA