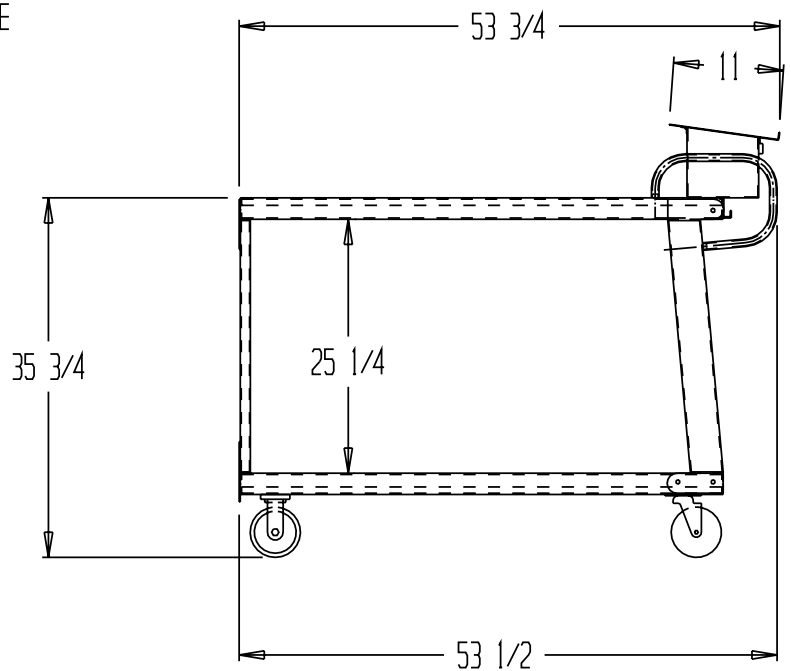
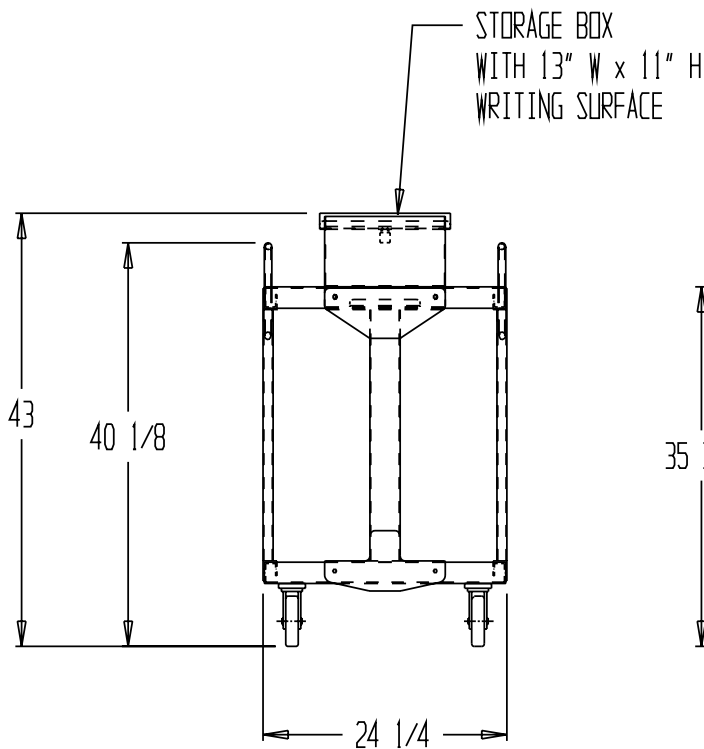
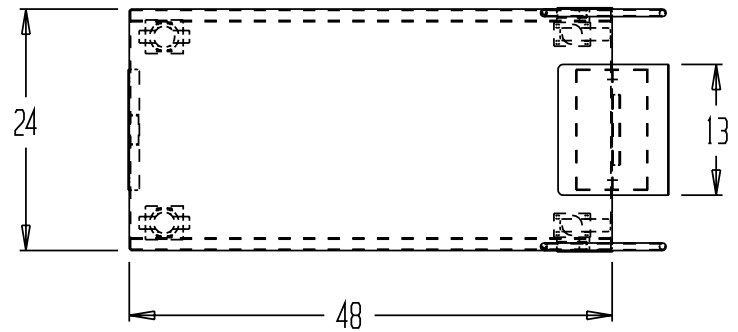


# EASY-ACCESS STEEL STOCK TRUCK, EASY-A-2448



## STANDARD FEATURES

MODEL NUMBER: EASY-A-2448

CAPACITY: 1,200 LBS.

DECK WIDTH: 24"

DECK LENGTH: 48"

OVERALL WIDTH: 24 1/4"

OVERALL LENGTH: 53 3/4"

OVERALL HEIGHT: 43"

CASTERS: POLY ON POLY, 5" X 1 1/4"

TWO SWIVEL W/LOCKS, TWO RIGID  
THREE LEG DESIGN

## SPECIAL FEATURES

-OPTIONAL BOLT ON STORAGE BOX

PRODUCTION WILL START UPON  
RECEIPT OF SIGNED APPROVAL  
DRAWING

## APPROVAL

I, the undersigned, hereby approve this print  
[ ] As drawn [ ] As marked  
This includes my approval of design & dimensions.  
Signed: \_\_\_\_\_  
Date: \_\_\_\_\_

DISTRIBUTOR'S NAME: HOF EQUIPMENT COMPANY PH: 888-990-1150		P.O.#: -
DRAWN BY: SR		W.O.#: -
DATE: 4-12-06		SALES: -
REFERENCE: -		DRWG./FILE NAME: 33-007-116-001

\*\*SPECIAL UNITS ARE NON-RETURNABLE  
\*AVAILABLE AT ADDITIONAL COSTS

scale: 1:20