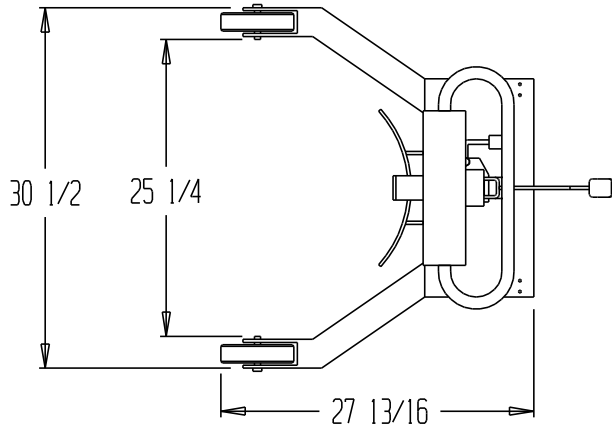


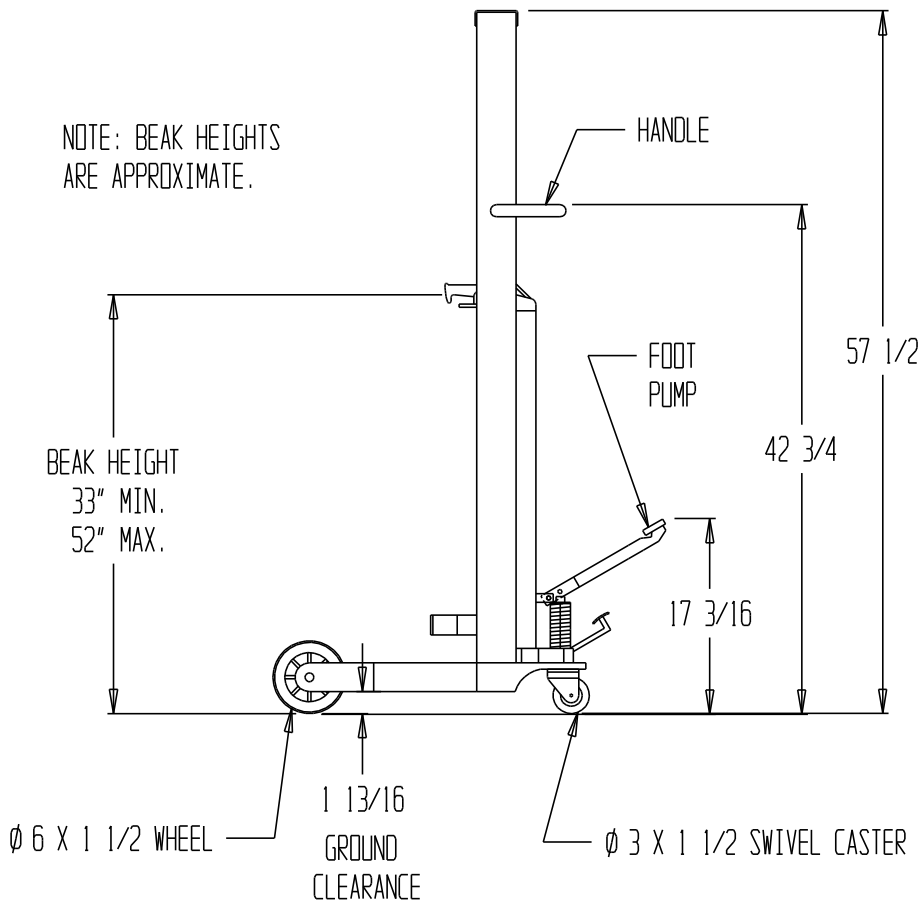
# PORTABLE DRUM JACK - DRUM-55-36



## STANDARD FEATURES

MODEL NUMBER: DRUM-55-36  
 CAPACITY: 500 LBS.  
 LIFT HEIGHT: 15" MAX.  
 BEAK HEIGHT: 33" MIN., 52" MAX  
 STRADDLE I.D.: 25 1/4"  
 OVERALL WIDTH: 30 1/2"  
 OVERALL LENGTH: 27 13/16"  
 OVERALL HEIGHT: 57 1/2"  
 CASTERS: 6 X 1 1/2 POLY-ON STEEL WHEELS  
 3 X 1 1/2 POLY-ON-STEEL SWIVEL CASTERS

NOTE: BEAK HEIGHTS  
 ARE APPROXIMATE.



## SPECIAL FEATURES

NONE

NOTE: dim tolerance +/- 1/2"

All graphics provided are for reference only.  
 If certain dimensions are critical please  
 verify those dimensions with your salesperson

FOR INTERNAL USE ONLY PROJECT SIGN OFF	
SALES	
ENG	
FAB.	
POWER	

I, THE UNDERSIGNED, AGREE THAT THE PRODUCT AS REPRESENTED SATISFIES DESIGN & DIMENSION REQUIREMENTS. I ALSO ACKNOWLEDGE MY DUTY TO CONFIRM PRODUCT & INSTALLATION COMPLIANCE WITH ALL APPLICABLE FEDERAL, STATE AND LOCAL REGULATIONS & STANDARDS.	
<b>ANY MODIFIED UNITS ARE NON-RETURNABLE</b>	
[ ] As drawn [ ] As marked	
Signed: _____	Date: _____
Printed Name: _____	
LEAD TIME WILL START UPON RECEIPT OF SIGNED APPROVAL DRAWING	

PRODUCTION WILL START UPON  
 RECEIPT OF SIGNED APPROVAL  
 DRAWING

\*\*SPECIAL UNITS ARE NON-RETURNABLE  
 \*AVAILABLE AT ADDITIONAL COSTS

DISTRIBUTOR'S NAME: <b>HOF Equipment Company</b>		P.O.#: _____
DRAWN BY: _____		DATE: _____
REFERENCE: _____	SCALE: 1:16	DRWG./FILE NAME: _____
QUOTED LEADTIME: _____	QUOTE #: _____	DRUM-55-36