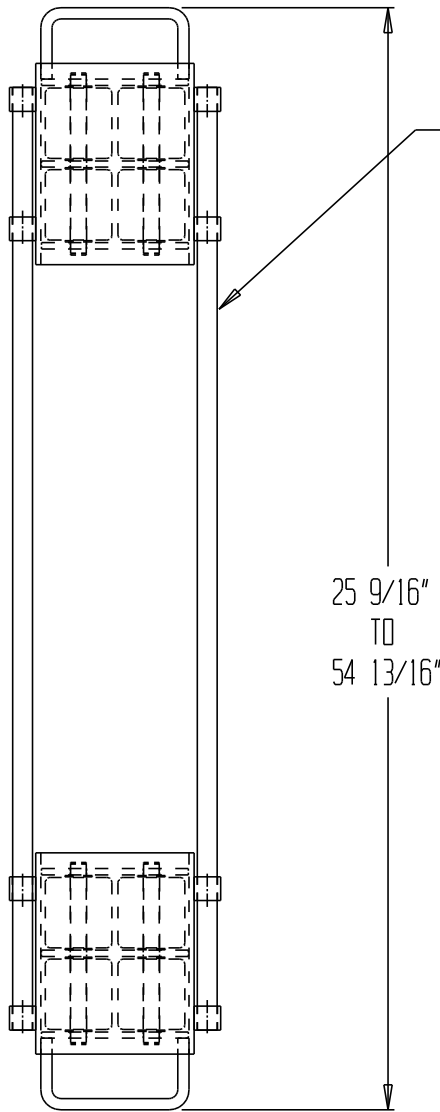


ADJUSTABLE MACHINERY SKATE - ASKT-6

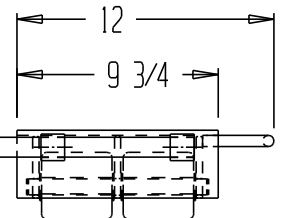
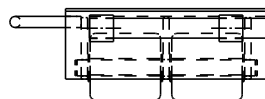
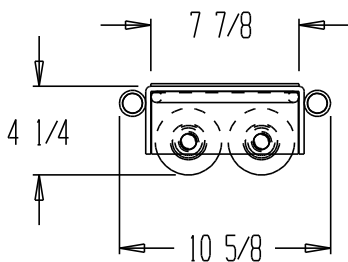


STANDARD FEATURES

MODEL NUMBER: ASKT-6
 CAPACITY: 12,000 LBS
 INDIVIDUAL SKATE DIMENSIONS:
 12 13/16" x 10 1/2" x 4 3/8"
 8 NYLON ROLLERS (4 PER SKATE)

SPECIAL FEATURES

NONE



DIM TOLERANCE. +/- 1/4"

PRODUCTION WILL START UPON
 RECEIPT OF SIGNED APPROVAL
 DRAWING

FOR INTERNAL USE ONLY
 PROJECT SIGN OFF

SALES	
ENG	
FAB.	
POWER	

APPROVAL

I, THE UNDERSIGNED, AGREE THAT THE PRODUCT AS REPRESENTED SATISFIES DESIGN & DIMENSION REQUIREMENTS. I ALSO ACKNOWLEDGE MY DUTY TO CONFIRM PRODUCT & INSTALLATION COMPLIANCE WITH ALL APPLICABLE FEDERAL, STATE AND LOCAL REGULATIONS & STANDARDS.

ANY MODIFIED UNITS ARE NON-RETURNABLE

As drawn As marked

Signed: _____ Date: _____

Printed Name: _____

LEAD TIME WILL START UPON RECEIPT OF SIGNED APPROVAL DRAWING

**SPECIAL UNITS ARE NON-RETURNABLE
 *AVAILABLE AT ADDITIONAL COSTS

DISTRIBUTOR'S NAME: HOF EQUIPMENT COMPANY		P.O.#: -
PH: 888-990-1150		W.O.#: -
DRAWN BY: KY	DATE: 9/13/04	SALES: -
REFERENCE: -	SCALE: -	DRWG./FILE NAME:
QUOTED LEADTIME: -	QUOTE #: -	33-007-126