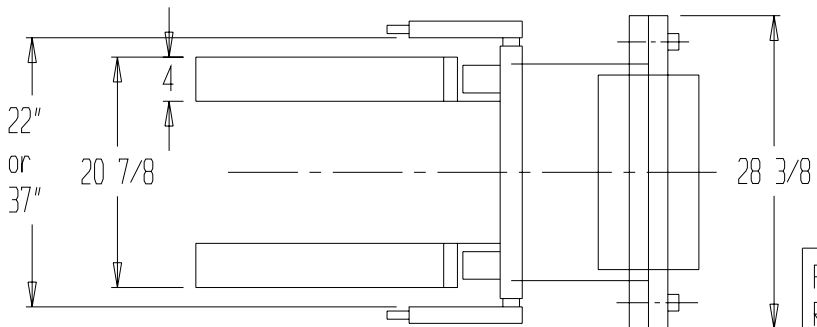
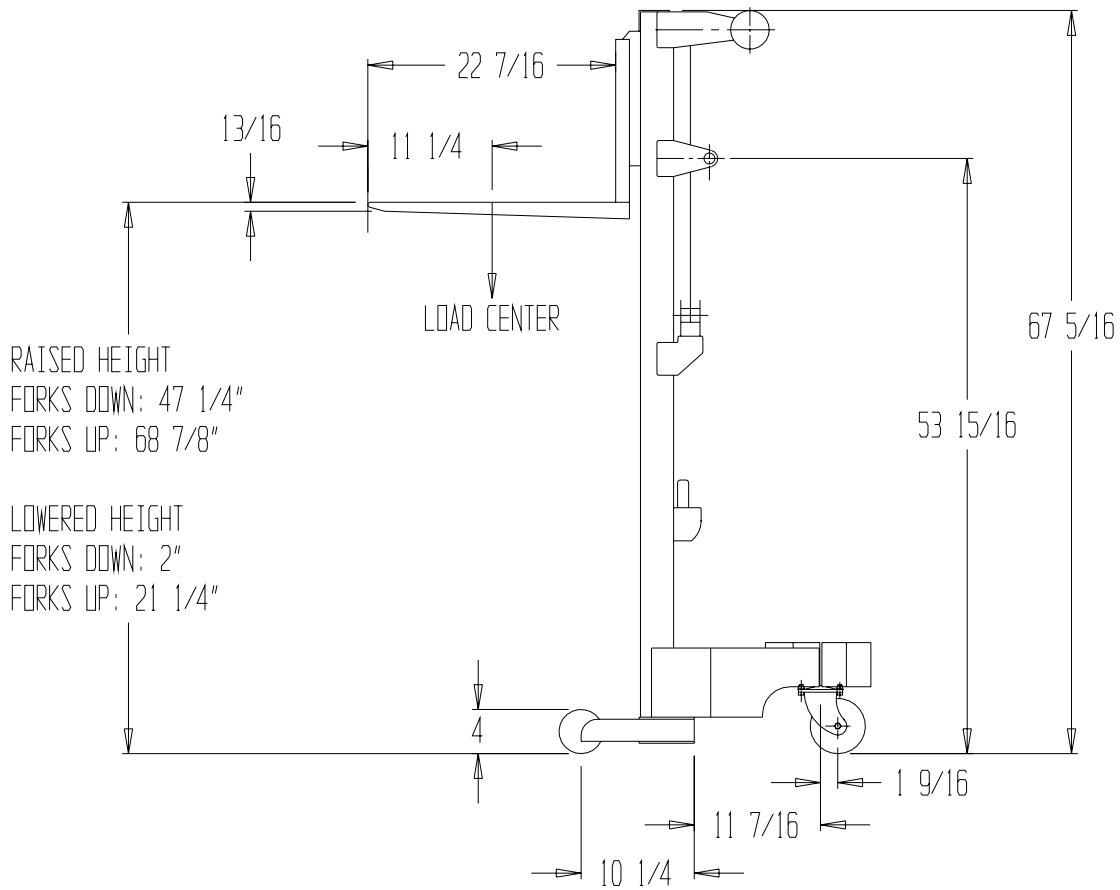


# HAND WINCH LIFT TRUCK - A-LIFT-CB



## STANDARD FEATURES

MODEL NUMBER: A-LIFT-CB  
 DURABLE STEEL AND  
 ALUMINUM CONSTRUCTION

CAPACITY: 500 LBS

LOWERED HEIGHT

FORKS DOWN: 2"

FORKS UP: 21 1/4"

RAISED HEIGHT

FORKS DOWN: 47 1/4"

FORKS UP: 68 7/8"

TWO Ø 5" REAR SWIVEL CASTERS

TWO Ø 4" FRONT WHEELS

RAISED HT = 47 COMPLETE REVOLUTION ON CRANK

BASE OD: 43 1/4" - 28 1/4"

BASE ID: 36 1/2" - 21 1/2"

PRODUCTION WILL START UPON  
 RECEIPT OF SIGNED APPROVAL  
 DRAWING

## APPROVAL

I, the undersigned, hereby approve this print  
 [ ] As drawn [ ] As marked  
 This includes my approval of design & dimensions.  
 Signed: \_\_\_\_\_  
 Date: \_\_\_\_\_

## SPECIAL FEATURES

NONE

\*\*SPECIAL UNITS ARE NON-RETURNABLE

\*AVAILABLE AT ADDITIONAL COSTS

DISTRIBUTOR'S NAME: HOF EQUIPMENT COMPANY PH: 888-990-1150		P.O.#:
DRAWN BY: Q. WESTFALL		W.O.#:
DATE: 3/21/07	SALES:	
REFERENCE:	DRWG./FILE NAME: 21-007-069	
SCALE 1:18		